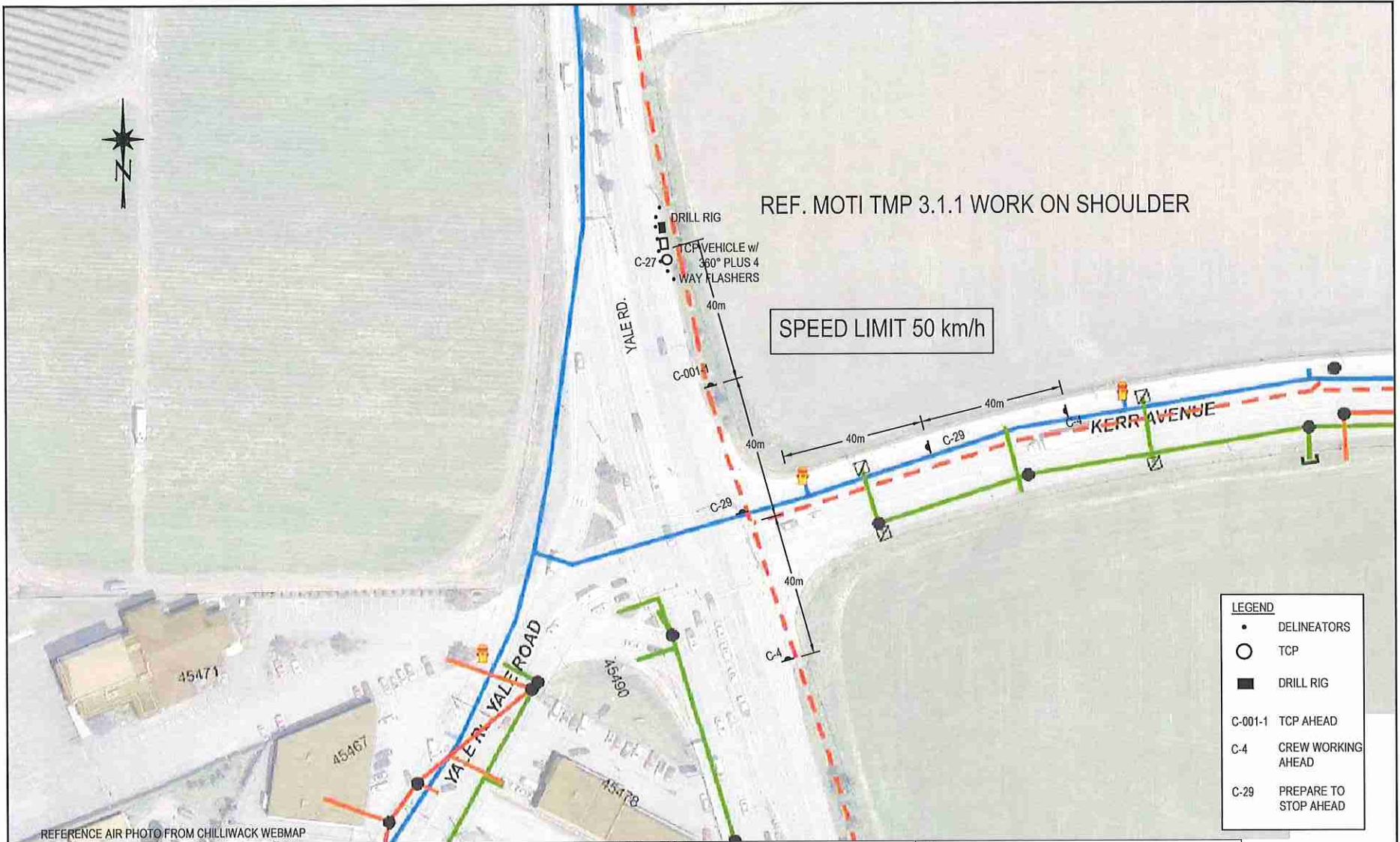


LEGEND
 TH17-01 [Symbol] 2017 TEST HOLE APPROXIMATE LOCATION

AERIAL IMAGE OBTAINED FROM CITY OF CHILLIWACK WEBMAP, RETRIEVED ON SEPTEMBER 13, 2017

	Rev.	Description	Date	Client	Associated Engineering (B.C.) Ltd.				Title		
				Project	Kerr Avenue Pump Station Chilliwack, BC				LOCATION PLAN		
				Project no.	Drawn	Design	Checked	Date	Scale	Drawing no.	
				17-7398	EV	JW	SS	September 13, 2017	1:1500	17-7398-01	



REF. MOTI TMP 3.1.1 WORK ON SHOULDER

SPEED LIMIT 50 km/h

LEGEND	
•	DELINEATORS
○	TCP
■	DRILL RIG
C-001-1	TCP AHEAD
C-4	CREW WORKING AHEAD
C-29	PREPARE TO STOP AHEAD

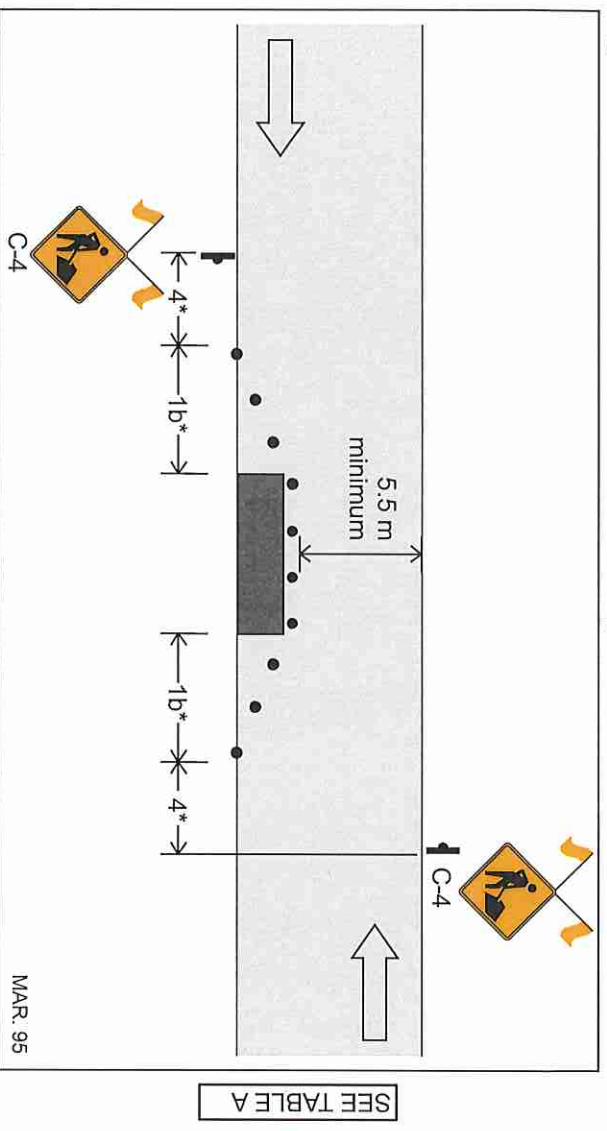
REFERENCE AIR PHOTO FROM CHILLIWACK WEBMAP



Rev.	Description	Date

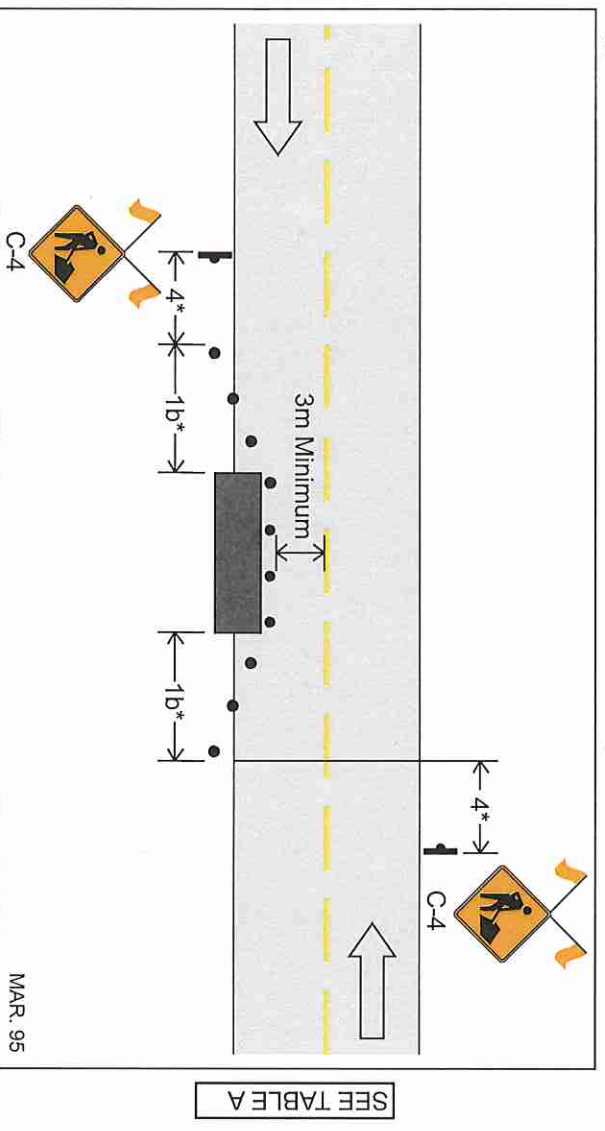
Client				Title			
Associated Engineering (B.C.) Ltd.				TRAFFIC MANAGEMENT PLAN			
Project				Test Hole 3			
Kerr Avenue Pump Station							
Chilliwack, BC							
Project no.	Drawn	Design	Checked	Date	Scale	Drawing no.	
17-7398	DD	EV	SH	September 13, 2017	1:1000	17-7398-TMP-01	

Figure 3.3.1 Work on Low Volume Roadway – No Centreline



- FAB (bar mode) or 360° plus 4-way flashers are optional.
- Use lane closure if speed limit is 70 km/h or greater, if sight distance is restricted (ie., dust, curves, etc.) or if there is less than approximately 5.5 m of road width remaining.

Figure 3.3.2 Roadside Work – Encroachment into Travelled Lane



- FAB (bar mode) or 360° plus 4-way flashers are optional.
- Where speeds are 70 km/h or greater a temporary speed zone of 50 km/h may be used in direction of obstructed lane.